

# NEW HANOVER TOWNSHIP

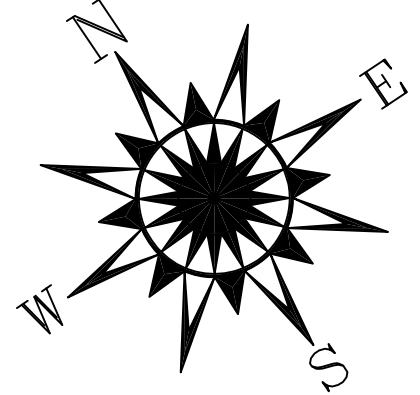
## MONTGOMERY COUNTY, PENNSYLVANIA

### ZONING MAP

THIS IS TO CERTIFY THAT THE FOLLOWING SHEET COMPRISES THE OFFICIAL ZONING MAP OF NEW HANOVER TOWNSHIP, MONTGOMERY COUNTY, PENNSYLVANIA ADOPTED THIS \_\_\_\_ DAY OF \_\_\_\_\_, 20\_\_

CHAIRMAN \_\_\_\_\_

SECRETARY \_\_\_\_\_



500' 0 1000' 2000' 3000' 4000' FT

#### LEGEND

--- ZONING BOUNDARY

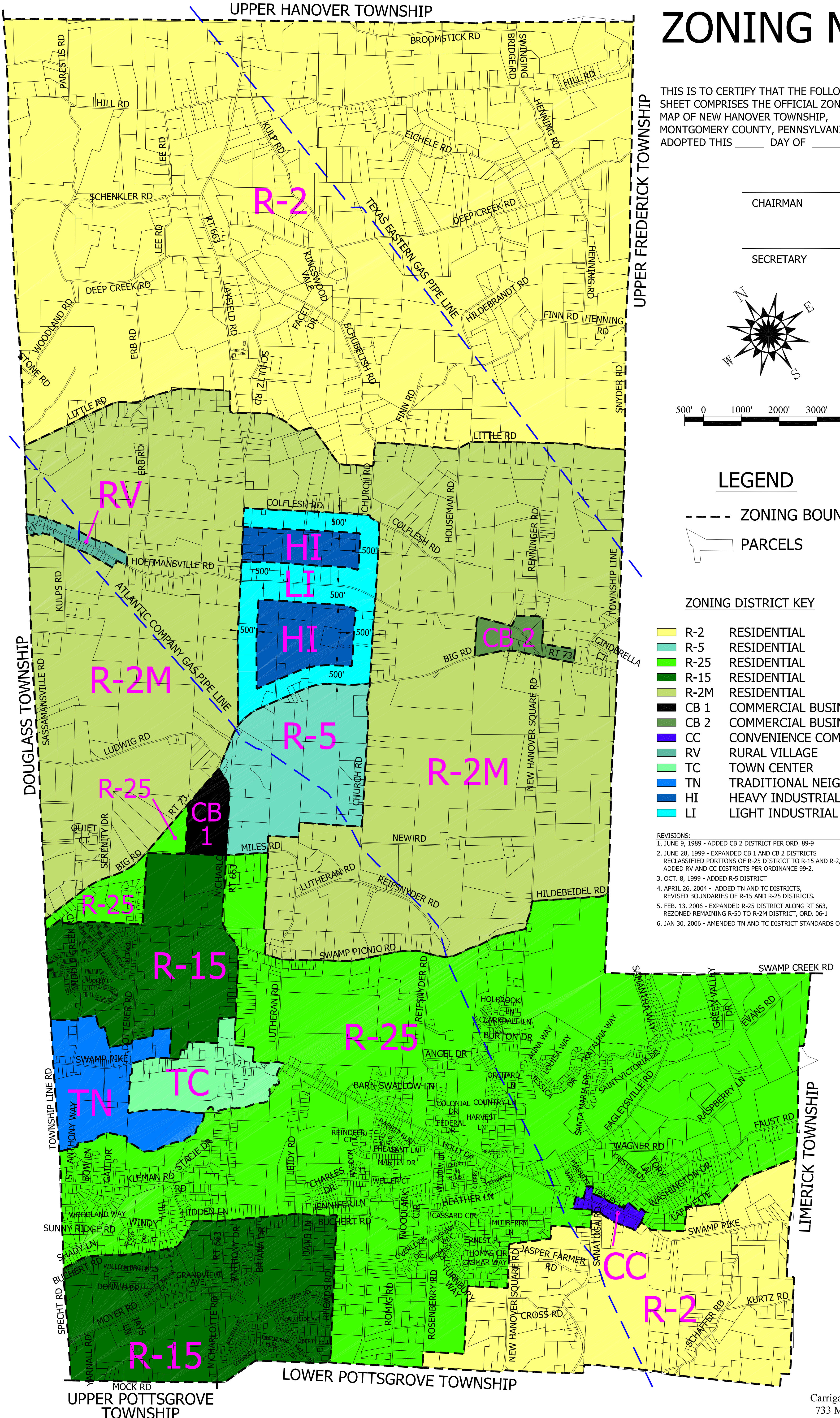
▭ PARCELS

#### ZONING DISTRICT KEY

<span style="background-color: yellow; border: 1px solid black; display: inline-block; width: 15px; height: 10px;"></span>	R-2	RESIDENTIAL
<span style="background-color: lightblue; border: 1px solid black; display: inline-block; width: 15px; height: 10px;"></span>	R-5	RESIDENTIAL
<span style="background-color: lightgreen; border: 1px solid black; display: inline-block; width: 15px; height: 10px;"></span>	R-25	RESIDENTIAL
<span style="background-color: green; border: 1px solid black; display: inline-block; width: 15px; height: 10px;"></span>	R-15	RESIDENTIAL
<span style="background-color: yellowgreen; border: 1px solid black; display: inline-block; width: 15px; height: 10px;"></span>	R-2M	RESIDENTIAL
<span style="background-color: black; border: 1px solid black; display: inline-block; width: 15px; height: 10px;"></span>	CB 1	COMMERCIAL BUSINESS
<span style="background-color: darkgreen; border: 1px solid black; display: inline-block; width: 15px; height: 10px;"></span>	CB 2	COMMERCIAL BUSINESS
<span style="background-color: purple; border: 1px solid black; display: inline-block; width: 15px; height: 10px;"></span>	CC	CONVENIENCE COMMERCIAL
<span style="background-color: blue; border: 1px solid black; display: inline-block; width: 15px; height: 10px;"></span>	RV	RURAL VILLAGE
<span style="background-color: cyan; border: 1px solid black; display: inline-block; width: 15px; height: 10px;"></span>	TC	TOWN CENTER
<span style="background-color: lightblue; border: 1px solid black; display: inline-block; width: 15px; height: 10px;"></span>	TN	TRADITIONAL NEIGHBORHOOD
<span style="background-color: darkblue; border: 1px solid black; display: inline-block; width: 15px; height: 10px;"></span>	HI	HEAVY INDUSTRIAL
<span style="background-color: cyan; border: 1px solid black; display: inline-block; width: 15px; height: 10px;"></span>	LI	LIGHT INDUSTRIAL

#### REVISIONS:

- JUNE 9, 1989 - ADDED CB 2 DISTRICT PER ORD. 89-9
- JUNE 28, 1999 - EXPANDED CB 1 AND CB 2 DISTRICTS RECLASSIFIED PORTIONS OF R-25 DISTRICT TO R-15 AND R-2, ADDED RV AND CC DISTRICTS PER ORDINANCE 99-2.
- OCT. 8, 1999 - ADDED R-5 DISTRICT
- APRIL 26, 2004 - ADDED TN AND TC DISTRICTS, REVISED BOUNDARIES OF R-15 AND R-25 DISTRICTS.
- FEB. 13, 2006 - EXPANDED R-25 DISTRICT ALONG RT 663, REZONED REMAINING R-50 TO R-2M DISTRICT, ORD. 06-1
- JAN 30, 2006 - AMENDED TN AND TC DISTRICT STANDARDS ORD. 06-2



THIS MAP IS BASED ON 2000 ORTHO PHOTOGRAPHS, MONTGOMERY COUNTY BOARD OF ASSESSMENT APPEALS TAX MAPS, AND NEW HANOVER TOWNSHIP ZONING ORDINANCES. ALL ATTEMPTS HAVE BEEN MADE TO MAINTAIN RELATIVE ACCURACY, HOWEVER, THIS MAP SHOULD NOT BE USED FOR ENGINEERING PURPOSES.

PROPERTY LINES ARE FROM GIS DATA OBTAINED FROM MONTGOMERY COUNTY. NO VERIFICATION FROM DEEDS HAS BEEN MADE AND MAP IS NOT TO BE USED AS A LEGAL DEFINITION OF THE PROPERTIES.